

Please click here to get a Lighting service contact overview:

Klicken Sie bitte hier um eine Übersicht unserer Service-Kontakte zu erhalten :

www.arri.de



04 - 2009

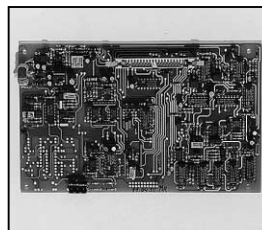
NOTE: WHEN ORDERING QUOTE PART NUMBER BEMERKUNG: BEI BESTELLUNG IDENT.-NR. ANGEBEN



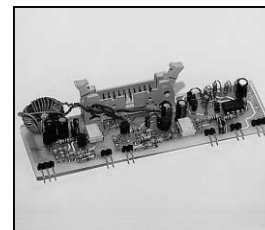
L4.82593.E
Front handle
Frontgriff



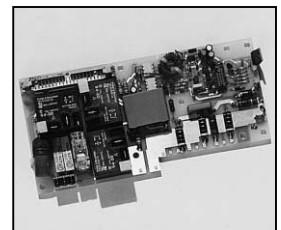
L4.82502.E
Rubber foot-set cpl. (4 pieces)
Gummifuß-Set kpl. (4 Stück)



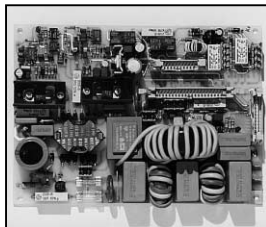
L4.82594.E
Control board
Regelkarte



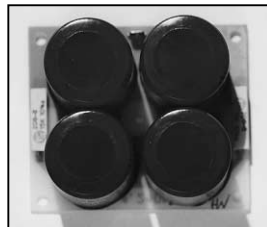
L4.82595.E
LF-base drive board
NF-Ansteuerung



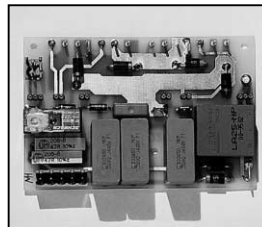
L4.82596.E
HF-base drive board
HF-Ansteuerung



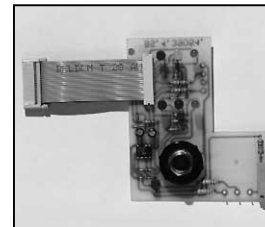
L4.82597.E
Mains board
Trafokarte



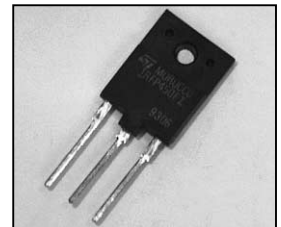
L4.82598.E
Input capacitor board
Elkokarte



L4.82599.E
LF-converter board
NF-Wandlerkarte



L4.82600.E
Front panel board
Frontplatte



L4.82508.E
Power Fet
Power Fet



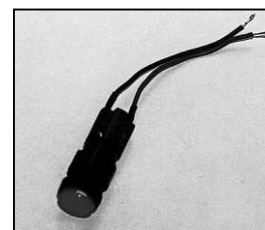
L4.82509.E
Diode
Diode



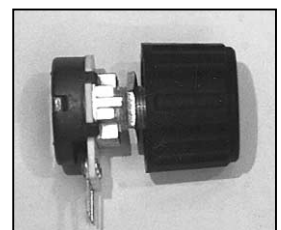
L4.82510.E
Input rectifier
Netzgleichrichter



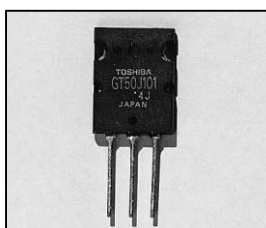
L4.89618.E
Main circuit breaker
Netzautomat



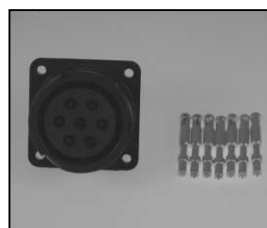
L4.82602.E
ON/OFF switch
Ein/Aus-Schalter



L4.82603.E
Dimm pot with knob
Dimmpotentiometer
mit Drehknopf



L4.82604.E
IGBT-Module
IGBT-Modul



L4.83859.E
Veam output connector
(female)
Veam Output Stecker
(Buchsenkontakt)