

SPARE PARTS FOR / ERSATZTEILE FÜR
ELECTRONIC BALLAST
ELEKTRONISCHES VORSCHALTGERÄT
575 EB



Please click here to get a Lighting service contact overview:

Klicken Sie bitte hier um eine Übersicht unserer Service-Kontakte zu erhalten :



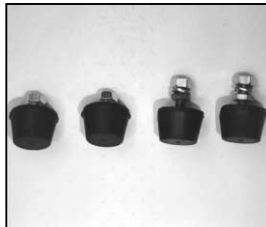
04 - 2009

www.arri.de

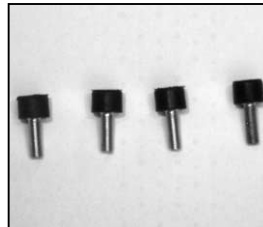
NOTE: WHEN ORDERING QUOTE PART NUMBER BEMERKUNG: BEI BESTELLUNG IDENT.-NR. ANGEBEN



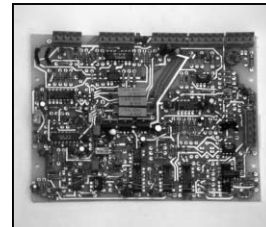
L4.82501.E
 Front handle-set cpl. (2 pieces)
 Frontgriffset kompl. (2 Stück)



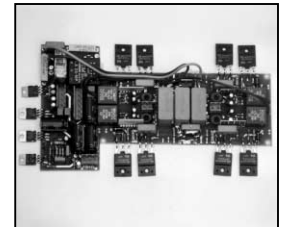
L4.82502.E
 Rubber foot-set cpl. (4 pieces)
 Gummifuß-Set kompl. (4 Stück)



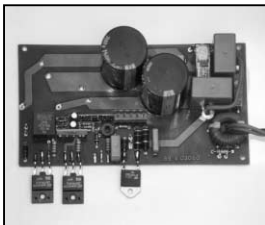
L4.82503.E
 Rubber foot-set back (4 pieces)
 Gummifuß-Set Rückwand (4 St.)



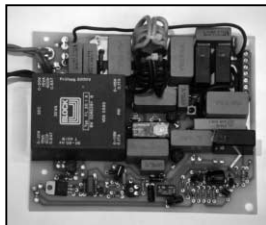
L4.82504.E
 Control board
 Regelkarte



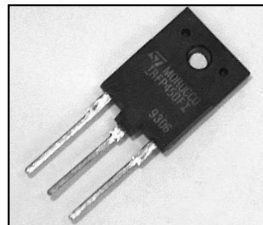
L4.82505.E
 LF-gate drive cpl.
 NF-Ansteuerung kpl.



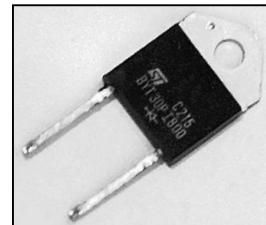
L4.82506.E
 HF-gate drive cpl.
 HF-Ansteuerung kpl.



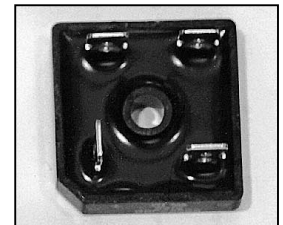
L4.82507.E
 Mains board
 Trafokarte



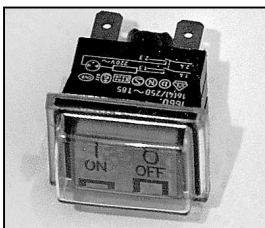
L4.82508.E
 Power FET IRFP 450 FI
 Power FET IRFP 450 FI



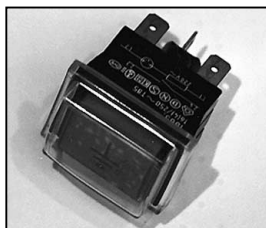
L4.82509.E
 Diode bit 30 PI 800
 Diode Bit 30 PI 800



L4.82510.E
 Input rectifier
 Netzgleichrichter



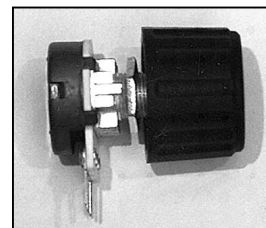
L4.82513.E
 Mains switch
 Netzschalter



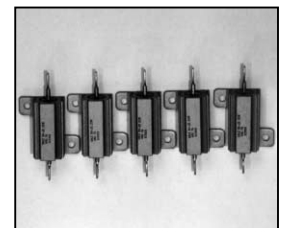
L4.82514.E
 Earth test switch
 Erdtaster



L4.82515.E
 Low noise switch with knob
 Low Noise-Schalter
 mit Drehknopf



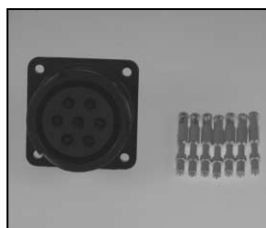
L4.82516.E
 Dimm pot with knob
 Dimmpotentiometer
 mit Drehknopf



L4.82517.E
 Start resistor-set (5 pieces)
 Startwiderstand-Set (5 Stück)



L4.82518.E
 Fuse-set (10 pieces)
 Feinsicherung-Set (10 Stück)



L4.83859.E
 Veam output connector
 (female)
 Veam Output Stecker
 (Buchsenkontakt)