

SPARE PARTS FOR / ERSATZTEILE FÜR

# ELECTRONIC BALLAST ELEKTRONISCHES VORSCHALTGERÄT 4000 EB · 4000 U EB · 2,5/4 U EB



**ARNOLD & RICHTER** GMBH & CO BETRIEBS KG, PULVERMÜHLE, D-83071 STEPHANSKIRCHEN  
CINE TECHNIK TELEFON: (08036) 3009-3084 FAX: (08036) 3009-3075

**ARRI LIGHTING SOLUTIONS GMBH** ERNST-AUGUSTIN-STRASSE 12, D-12489 BERLIN  
TELEFON: (030) 678-233-0 FAX: (030) 678-233-99

**ARRI (GB) LIMITED** 2 HIGHBRIDGE, OXFORD ROAD, UXBRIDGE, MIDDLESEX UB8 1LX  
TELEPHONE: (0) 1895-457-000 FAX: (0) 1895-457-001

**ARRI INC. NEW YORK OFFICE** 617 ROUTE 303, BLAUVELT, NY 10913-1109  
TELEPHONE: (845) 353-1400 FAX: (845) 425-1250

**ARRI INC. BURBANK OFFICE** 600 NORTH VICTORY BLVD., BURBANK, CA 91502-1639  
TELEPHONE: (818) 841-7070 FAX: (818) 848-4028

**ARRI CANADA LTD.** 415 HORNER AVENUE, UNIT 11 ETOBICOKE, ONTARIO M8W 4W3  
TELEPHONE: (416) 255-3335 FAX: (416) 255-3399

**ARRI ITALIA S.R.L.** VIALE EDISON, 318 - 20099 SESTO SAN GIOVANNI (MI)  
TELEPHONE: (02) 2622 7175 FAX: (02) 242 1692



03 - 2007

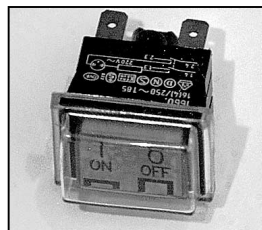
**NOTE: WHEN ORDERING QUOTE PART NUMBER** **BEMERKUNG: BEI BESTELLUNG IDENT.-NR. ANGEBEN**



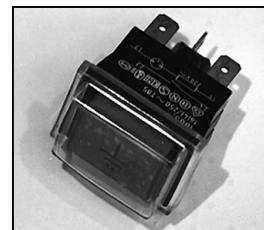
**L4.82502.E**  
Rubber foot-set cpl. (4 pieces)  
Gummifuß-Set kompl. (4 Stück)



**L4.82510.E**  
Input rectifier  
Netzgleichrichter



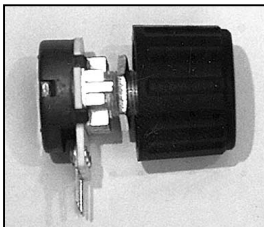
**L4.82513.E**  
Mains switch  
Netzschalter



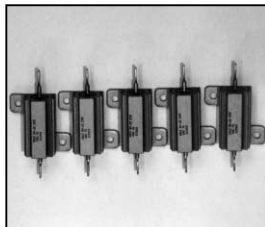
**L4.82514.E**  
Earth test switch  
Erdtaster



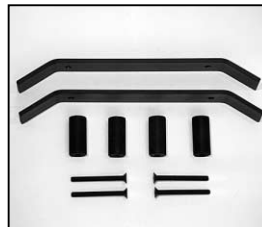
**L4.82515.E**  
Low noise switch with knob  
Low Noise-Schalter  
mit Drehknopf



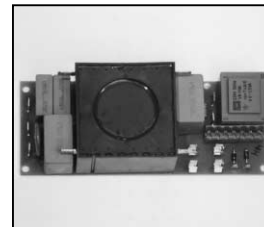
**L4.82516.E**  
Dimm pot with knob  
Dimmpotentiometer  
mit Drehknopf



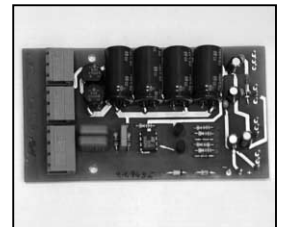
**L4.82517.E**  
Start resistor-set (5 pieces)  
Startwiderstand-Set (5 Stück)



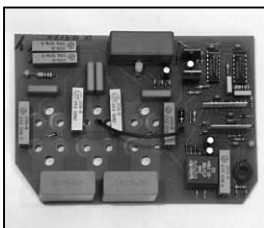
**L4.82526.E**  
Front handle-set cpl.  
Frontgriff-Set kpl.



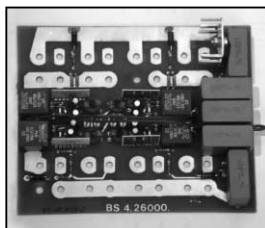
**L4.82528.E**  
RF-line filtering board  
RF-Netzfilter



**L4.82529.E**  
Electr. voltage supply board  
Elektr. Spannungsversorgung



**L4.82530.E**  
HF-converter board  
HF-Wandlerkarte



**L4.82531.E**  
LF-converter board  
NF-Wandlerkarte



**L4.82532.E**  
Power FET module  
Power FET Modul  
TSD 4 M 450 V



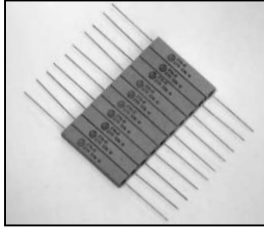
**L4.82533.E**  
Diode module byt 261 PIV 800  
Diodenmodul Byt 261 PIV 800



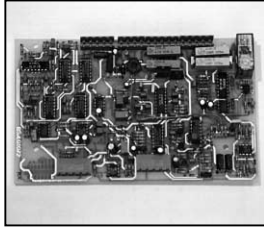
**L4.82534.E**  
HF-choke (2 terminals)  
HF-Drossel (2 Klemmen)



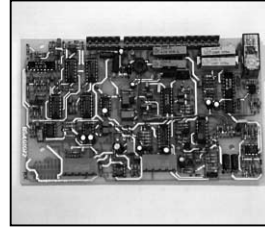
**L4.82537.E**  
Input capacitor 1800 MF/400 V  
Ladeelko 1800 MF/400 V



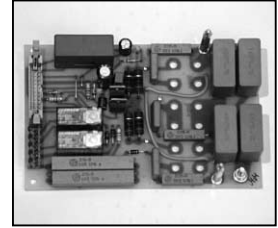
**L4.82538.E**  
Ignition resistor-set (10 pieces)  
Zündwiderstand-Set (10 Stück)



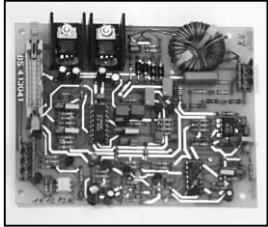
**L4.82539.E**  
Control board (for EB 4000 U)  
Regelkarte (für EB 4000 U)



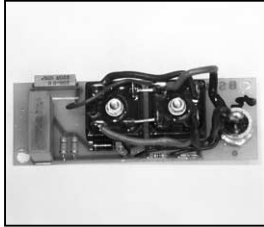
**L4.82540.E**  
Control board (for EB 4000)  
Regelkarte (für EB 4000)



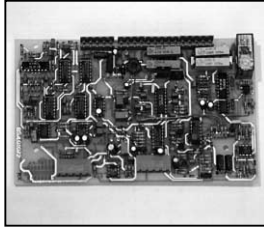
**L4.82541.E**  
Mother board act. line filter  
Basisplatine akt Netzfilter



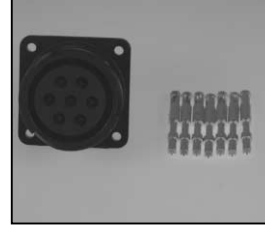
**L4.82542.E**  
Control board act. line filter  
Regelkarte akt Netzfilter



**L4.82543.E**  
Overload protect board  
Überspannungsschutz-  
Schaltung



**L4.82544.E**  
Control board (for EB 2,5/4 U)  
Regelkarte (für EB 2,5/4 U)



**L4.83858.E**  
Veam output connector  
(female)  
Veam Output Stecker  
(Buchsenkontakt)