

SPARE PARTS FOR / ERSATZTEILE FÜR
ELECTRONIC BALLAST
ELEKTRONISCHES VORSCHALTGERÄT
2500 EB



Please click here to get a Lighting service contact overview:

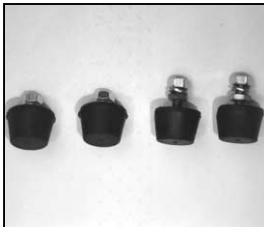
Klicken Sie bitte hier um eine Übersicht unserer Service-Kontakte zu erhalten :

www.arri.de

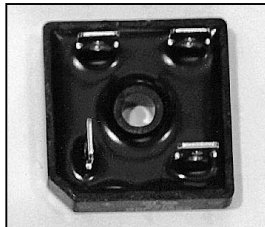


04 - 2009

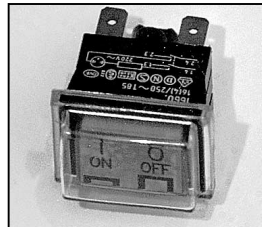
NOTE: WHEN ORDERING QUOTE PART NUMBER BEMERKUNG: BEI BESTELLUNG IDENT.-NR. ANGEBEN



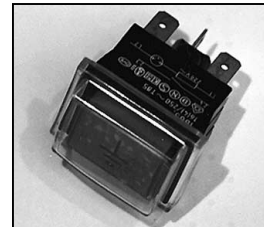
L4.82502.E
 Rubber foot-set cpl. (4 pieces)
 Gummifuß-Set kompl. (4 Stück)



L4.82510.E
 Input rectifier
 Netzgleichrichter



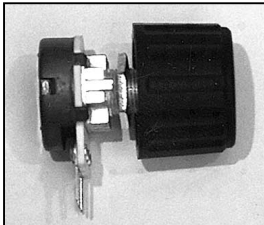
L4.82513.E
 Mains switch
 Netzschalter



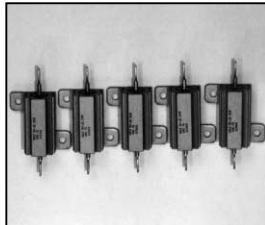
L4.82514.E
 Earth test switch
 Erdtaster



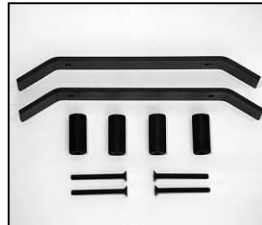
L4.82515.E
 Low noise switch with knob
 Low Noise-Schalter
 mit Drehknopf



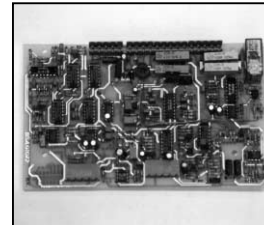
L4.82516.E
 Dimm pot with knob
 Dimmpotentiometer
 mit Drehknopf



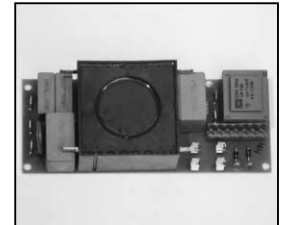
L4.82517.E
 Start resistor-set (5 pieces)
 Startwiderstand-Set (5 Stück)



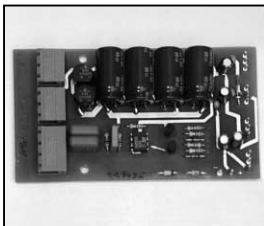
L4.82526.E
 Front handle-set cpl.
 Frontgriff-Set kpl.



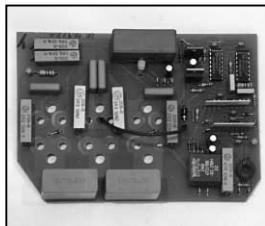
L4.82527.E
 Control board
 Regelkarte



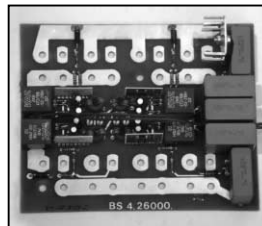
L4.82528.E
 RF-line filtering board
 RF-Netzfilter



L4.82529.E
 Electr. voltage supply board
 Elektr. Spannungsversorgung



L4.82530.E
 HF-converter board
 HF-Wandlerkarte



L4.82531.E
 LF-converter board
 NF-Wandlerkarte



L4.82532.E
 Power FET module
 Power FET Modul
 TSD 4 M 450 V



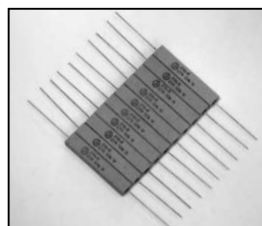
L4.82533.E
 Diode module Byt 261 PIV 800
 Diodenmodul Byt 261 PIV 800



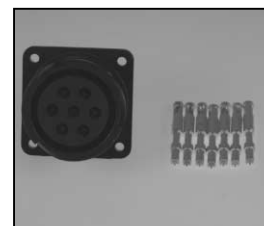
L4.82534.E
 HF-choke (2 terminals)
 HF-Drossel (2 Klemmen)



L4.82537.E
 Input capacitor 1800 MF/400 V
 Ladeelko 1800 MF/400 V



L4.82538.E
 Ignition resistor-set (10 pieces)
 Zündwiderstand-Set (10 Stück)



L4.83858.E
 Veam output connector
 (female)
 Veam Output Stecker
 (Buchsenkontakt)