

**ELECTRONIC BALLAST
ELEKTRONISCHES VORSCHALTGERÄT
1200 EB**



Please click here to get a Lighting service contact overview:

Klicken Sie bitte hier um eine Übersicht unserer Service-Kontakte zu erhalten :



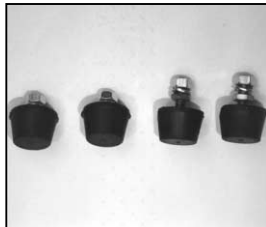
04 - 2009

www.arri.de

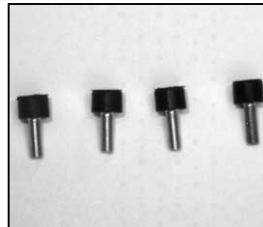
NOTE: WHEN ORDERING QUOTE PART NUMBER BEMERKUNG: BEI BESTELLUNG IDENT.-NR. ANGEBEN



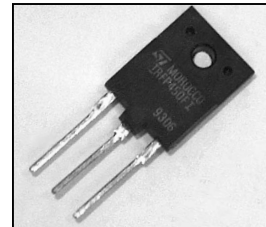
L4.82501.E
Front handle-set cpl. (2 pieces)
Frontgriff-Set kompl. (2 Stück)



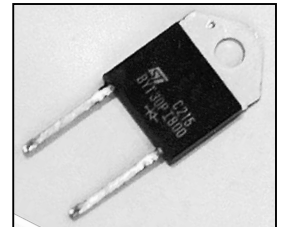
L4.82502.E
Rubber foot-set cpl. (4 pieces)
Gummifuß-Set kompl. (4 Stück)



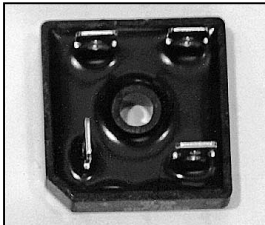
L4.82503.E
Rubber foot-set back (4 pieces)
Gummifuß-Set Rückwand (4 St.)



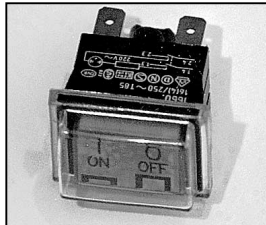
L4.82508.E
Power FET IRFP 450 FI
Power FET IRFP 450 FI



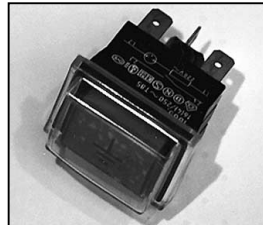
L4.82509.E
Diode bit 30 PI 800
Diode Bit 30 PI 800



L4.82510.E
Input rectifier
Netzgleichrichter



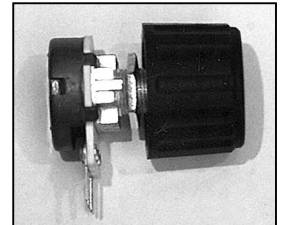
L4.82513.E
Mains switch
Netzschalter



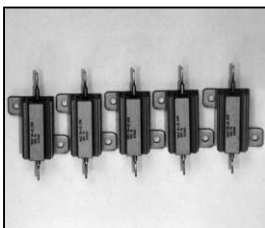
L4.82514.E
Earth test switch
Erdtaster



L4.82515.E
Low noise switch with knob
Low Noise-Schalter
mit Drehknopf



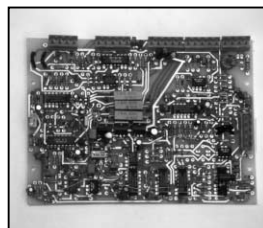
L4.82516.E
Dimm pot with knob
Dimmpotentiometer
mit Drehknopf



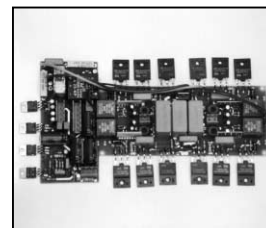
L4.82517.E
Start resistor-set (5 pieces)
Startwiderstand-Set (5 Stück)



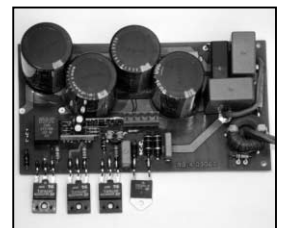
L4.82518.E
Fuse-set (10 pieces)
Feinsicherung-Set (10 Stück)



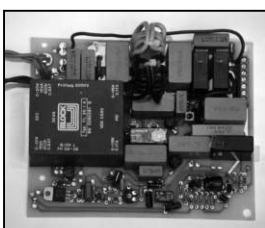
L4.82520.E
Control board
Regelkarte



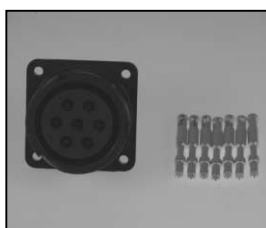
L4.82521.E
LF-gate drive cpl.
NF-Ansteuerung kpl.



L4.82522.E
HF-gate drive cpl.
HF-Ansteuerung kpl.



L4.82523.E
Mains board
Trafokarte



L4.83859.E
Veam output connector
(female)
Veam Output Stecker
(Buchsenkontakt)